

Denken-Highdental Co., Ltd.
130 Ishigori-cho, Ohyake, Yamashina-ku,
Kyoto, Japan 607-8187
P: +81-75-571-1000 F: +81-75-572-9000
E: denken@kdf.co.jp W: www.kdf.co.jp



KDF
www.kdf.co.jp

CASCOM SE

Induction Casting Machine



MAIN CHARACTERISTIC

High-Frequency Induction Heating

- Takes only 2 to 3 min to cast.
- Capable of casting Co-Cr alloy at high temp.
- Minimizes the risk of overheating by KDF unique three stage melting.

Vacuum & Pressure Casting

- Does not use flame during melting process and applies vacuum during casting process so the alloy does not absorb gas, minimizing porosity and creating extremely smooth surface.

Automatic Inverting Chamber

- Minimizes the risk of miscasts by minimizing the contact of the melting alloy with the atmosphere prior to entering the casting ring.

Argon Gas Melting

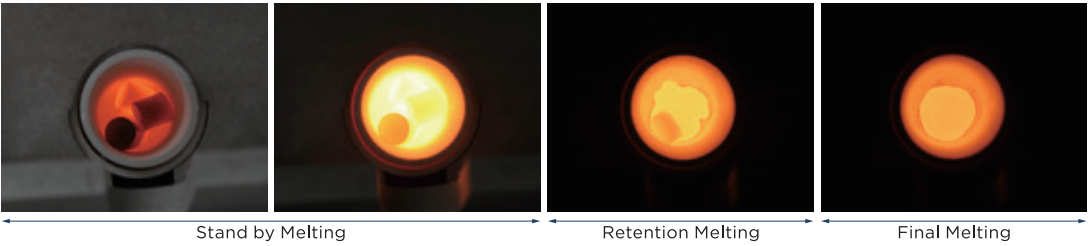
- Creates argon gas substitution inside the chamber.
- Prevents from oxidation and sticking.

User-Friendly and Very Simple to Operate

- Three stage melting of Stand-By, Retention and Final melting.
- Three pressure timings for Co-Cr, Ni-Cr and Precious

SPECIFICATIONS

Power Requirement	AC 220V - 240V 50/60Hz Max. 3.5kVa
Dimension	560(W) x 490(D) x 490(H)mm
Weight	42kg
Melting	Induction Heating
Casting	Automatic Chamber Inverting Vacuum and Pressure
Compressed Air or Argon	Air 0.5 - 1.0MPa, Argon gas 0.5 - 0.8MPa
Pressurized Air	0.35MPa, Fixed
Argon Gas Atmosphere	0.05MPa, Fixed
Melting Capacity	Precious Alloy 10 - 120g but less than 10cc Non-Precious Alloy 10 - 60g but less than 10cc
Heating Performance	Within 3min When Melting Co-Cr



COLLOMBIUM TYPE II Ni-Cr alloy for porcelain Ni 60.2, Cr 24, Mo 9.1, SiCr 5.0, Other 1.7	
Strength	425MPa
Elongation	4%
Vickers Hardness	282Hv
Thermal Expansion 50-500°C	14.1×10 ⁻⁶ /K-1
Melting Temp.	1250°C
Gravity	8

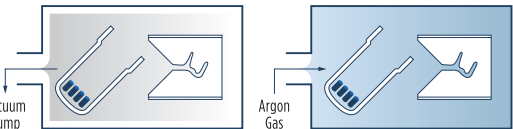


HI CHROME SOFT 7 Ni-Cr alloy for crown & Bridge Ni 73.5, Cr 5.0, Cu 12.5, Sn 5.0 Other 4.0	
Strength	405MPa
Elongation	5%
Vickers Hardness	288Hv
Thermal Expansion 50-500°C	-
Melting Temp.	1250°C
Gravity	8.3

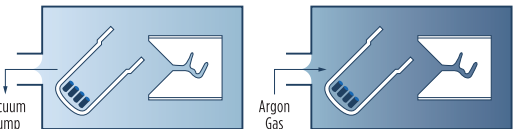


COBALT BOND Co-Cr alloy for porcelain Co 59.3, Cr 25.3, W 6.4, Other 9.0	
Strength	570MPa
Elongation	4%
Vickers Hardness	295Hv
Thermal Expansion 50-500°C	14.5×10 ⁻⁶ /K-1
Melting Temp.	1375°C
Gravity	8.6

1st Argon Gas Substitution



2nd Argon Gas Substitution



NEO SUPER CASCOM

Ceramic Heater Casting Machine



MAIN CHARACTERISTIC

Precise Temperature Control

- A ceramic heater element that allows technicians to accurately adjust melt temperature by 1° C.
- Porosity-free dense castings.

Vacuum & Pressure Casting

- Does not use flame during melting process and applies vacuum during casting process so the alloy does not absorb gas, minimizing porosity and creating extremely smooth surface.

Automatic Inverting Chamber

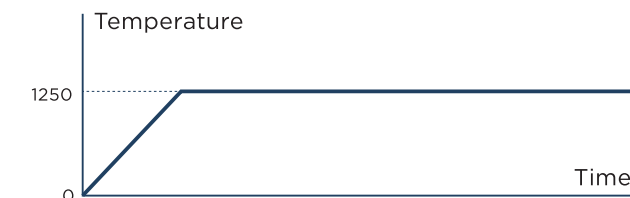
- Minimizes the risk of miscasts by minimizing the contact of the melting alloy with the atmosphere prior to entering the casting ring.

Argon Gas Melting

- Creates argon gas atmosphere inside the crucible.
- Prevents from oxidation and sticking.

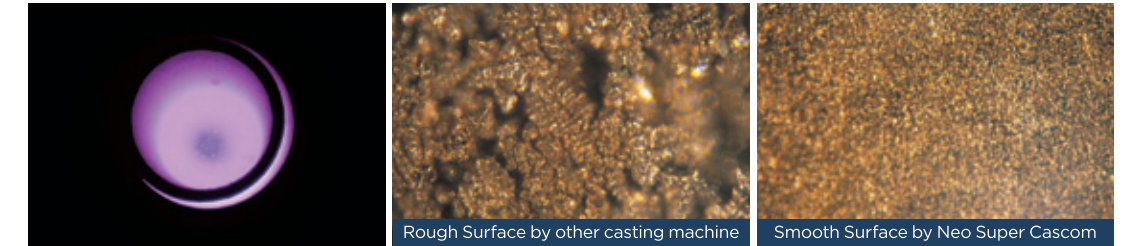
Compact Size & Easy to Set Up

- Compact Desktop size of 504 x 530 x 521mm with 49kg
- No Water Line

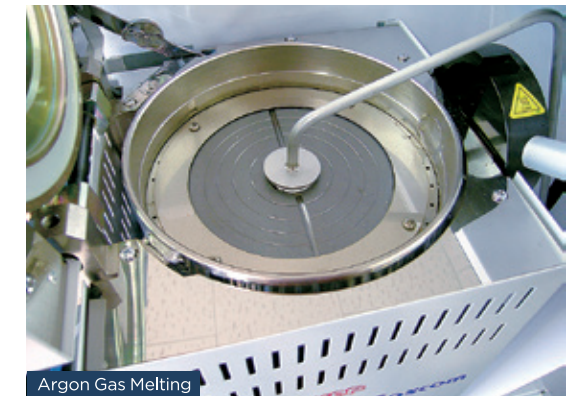
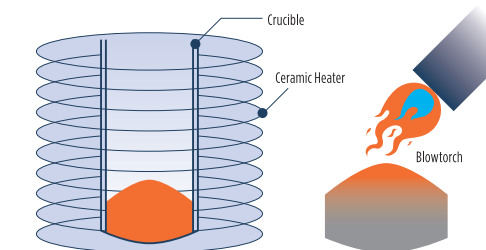


SPECIFICATIONS

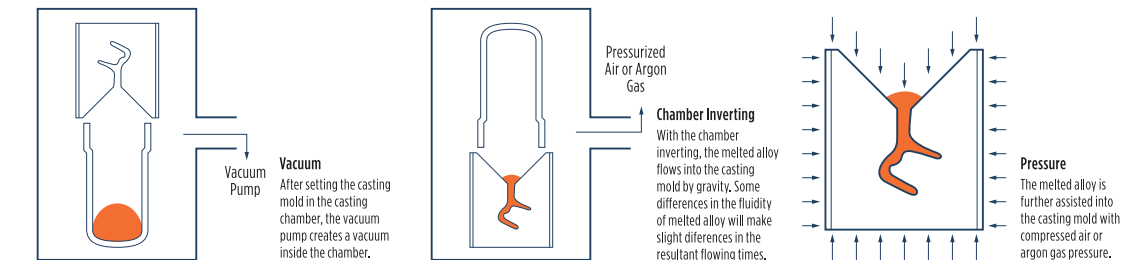
Power Requirement	AC 220V - 230V 50/60Hz Max. 1.5kVA
Dimension	504(W) x 521(D) x 530(H)mm
Weight	49kg
Melting	Ceramic Heating
Casting	Automatic Chamber Inverting Vacuum and Pressure
Compressed Air or Argon	Air 0.5 - 1.0MPa, Argon gas 0.7 - 0.8MPa
Max Temperature	1,530° C
Melting Capacity	Precious Alloy 150g Non-Precious Alloy 45g



Spiral Ceramic Heating Element



Vacuum & Pressure Casting





ZIRCOM

Sintering Furnace

MAIN CHARACTERISTIC

- Compact Size with High Productivity**
- The unit has capability to sinter 75 units simultaneously by three stackable trays.
 - Compact size of 300(W) x 450(D) x 640(H)mm with 29kg

- Normal and Quick Firing**
- The unit can be processed in various ways including both a normal firing and a quick firing.

- Programmable Furnace**
- The programmable sintering furnace allows you to put 100 programs with 20 steps.

- SD Card Slot Device**
- Used to create program at PC by CSV file and update software.

SPECIFICATIONS

Power Requirement	AC 220V - 240V 50/60Hz Max. 2.5kVa
Dimension	300(W) x 450(D) x 640(H)mm
Weight	29kg
Heating Element	4 Molybdenum Disilicides
Control	PID
Firing Platform	Φ95mm
Tray	3 Stackable Trays (25 units each)
Max Temperature	1,600° C
SD Card Slot	Software Update Program Back Up



Master Plus

Porcelain Furnace



MAIN CHARACTERISTIC

More compact is much better.

- Excellent porcelain results can be created by KDF heat technology and know-how and also can be compatible with the compact body size.
- Precise even muffle heat distribution will not busy any warping in baking degassing process.
- Compact Size: L260 x W311 x H431mm, 15.2kg

Easy Operation Panel with LCD

- The easy viewable LCD gives you friendly operation and programming work.



SPECIFICATIONS

Power Requirement	AC 220V - 230V, 50/60Hz, Max. 1.4kVA
Dimension	311(W) x 260(D) x 431(H)mm
Weight	15.2kg
Max. Temperature	1200°C
SD Card Slot	Software Update
	Program Back Up



007Plus 008Plus

Burnout Furnace



MAIN CHARACTERISTIC

Simple Operation

- 007Plus and 008Plus can store multi-firing program up to 10 courses for every investment need. Their units feature a quick firing button that allows you to change the normal firing program to the quick version for quick heat investment.

3 Firing Stages

- 007Plus and 008Plus allows you to obtain 3 stages of firing temperature with optimum heat rising speed and precise temperature maintenance for each specific stage. Operator can program multi stage for various investments.



SPECIFICATIONS

	007Plus	008Plus
Power Requirement	AC220V, 50/60Hz, 1.2kVA	AC220-230V, 50/60Hz, 3.0kVA
Dimension	310(W)x445(D)x345(H)mm	420(W)x480(D)x465(H)mm
Muffle Dimension	120(W)x220(D)x110(H)mm	180(W)x255(D)x155(H)mm
Weight	20kg	35kg
Program	10	10
Max Temperature	1100°C	1100°C
Firing Stage	3	3

JET 7000 SYSTEM SET



JET 7000



An injection system suitable for injecting any granule-type resins (acrylic and polyamide) in one swift motion.

- Compact design
- Suitable for injecting polyamide resins and acrylic resins in granule forms
- Operation is simple, just set the flask and lower the lever

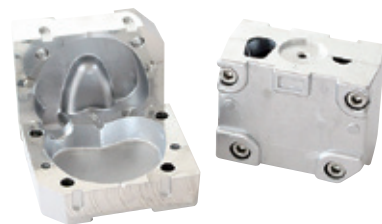
JET MELT 6 (6 pots) JET MELT 2 (2 pots)



Don't wait around for your resins to melt. Melt up to six resins at a time with our JET MELT

- PID control system responds rapidly to environmental temperature changes and disturbances which will reset the temperature.
- Six melting pots make mass production possible.

DREAM FLASK



Our patented flask has two holes to facilitate de-waxing without deflasking. The waxes will pass through the flask and deposit into a wax collecting pot in our de-waxing systems.

- Compact design
- Suitable for injecting polyamide resins and acrylic resins in granule forms

- JET 7000 (with 8mmφ Hose x 3M)
- JET MELT 6 (6 pots) or JET MELT 2 (2 pots)
- JET 7000 Cylinder + Press Plate (for Aluminum case)
- ALUMINUM CASE
- Removal Plate
- Aluminum Funnel
- Wooden Hammer
- Cylinder Pliers S
- Work Gloves & Protection Gloves
- SULFON PACKING
- DREAM FLASK
- Pressurization Bar
- Cylinder Pliers L
- Hex. Tool 8mm
- Funnel for DREAM FLASK
- Sprue-Wax (φ7.5mm, φ5.5mm, φ4.0mm, φ3.0mm)

OTHER RELATED RESIN PRODUCTS



ISO RESIN Q
Heat-curing acrylic resin
Powder 1kg Liquid 1L



BIO PLAST
Thermoplastic Polyamide Resin
1kg



THERMOPLASTIC RESIN (ACRY-TONE & BIO-TONE)

Acry-Tone

Acry-Tone is a new, premium-grade acrylic denture base that is both flexible and fully repairable! Flexible dentures have traditionally been made with vinyl or nylon-based resins, which are hard to reline or to repair when torn or broken. With Acry-Tone, you now have a flexible acrylic option that is 100% fully relinable and repairable using our ISO-Fast self curing method (or with other conventional self/cold-curing methods)!

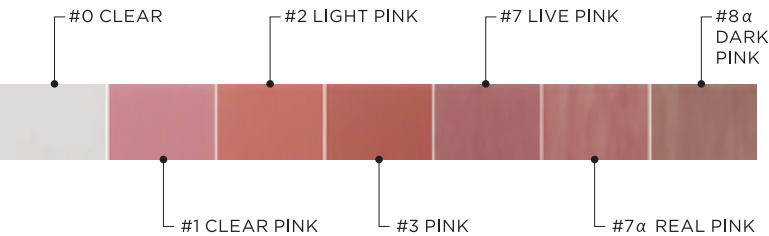
A full array of removable applications (flippers, metal-free partial dentures, full dentures, over-dentures, hybrid partial dentures, flexible-partials, nightguards, etc.) can be fabricated



without any restrictions with our material.

Although Acry-Tone has a wide array of applications without a metal framework, we recommend taking caution by utilizing a metal framework when necessary. It is also recommended to keep the thickness higher than that of the breaking threshold to prevent fracturing.

Our Acry-Tone resin has also been shown to have five times less residual monomer than standard heat-cured acrylic resins in lab tests. Our hypoallergenic material significantly reduces the concerns for residual monomers which can lead to allergic reactions.



*7α Real Pink will match most patient's gum colors. For the hand-to-match ethnic shades, try #8α Dark Pink

Both of our resins posses these great qualities:

- High flexibility and strength
- Relinable and repairable
- Injectable
- Easy grinding and polishing leaves a brilliant shine
- #7α Real Pink shade matches 95% of patient's tissue color
- Odor and plaque resistant
- Biosafe (hypoallergenic and allergen-free)
- Extremely low rate of shrinkage (<1%)
- UV resistant

	Water Sorption(wt%)	Flexural Strength(MPa)	Flexural Elasticity(MPa)	Impact Strength(K/J m2)
Acry-Tone	0.5	89	2072	5
Bio-Tone	3.5	87	2186	8
Bio Plast	1.5	27	543	4



RESIN PRIMER 50ML
Priming agent for bonding prosthetic teeth



ISO FAST
Self curing resin for repairing of Acrylic denture base.
Powder 100g Liquid 50ml

ISO FAST #7α
Real Pink matching competitor's shades
After Grinding and Polishing



BIO-TONE

BIO-TONE is a new, premium-grade polyamide denture resin that it both flexible and unbreakable!

With BIO-TONE, technicians now have an unbreakable flexi-material option that can be repaired and consistently relined using our special chemicals.

Our SUPER PRIMER aids in modifying BIO-TONE applications through reinjection while our RELINING PRE-PRIMER aids in adhesion between BIO-TONE and silicone-based soft-relining materials.

BIO-TONE' s allows for partials to be fabricated very thinly without sacrificing its durability.

Our Competitor' s UV Resistance Results

Resin pieces on the right are resins in their original state and the resin pieces on the left are discolored after prolonged exposure to light.



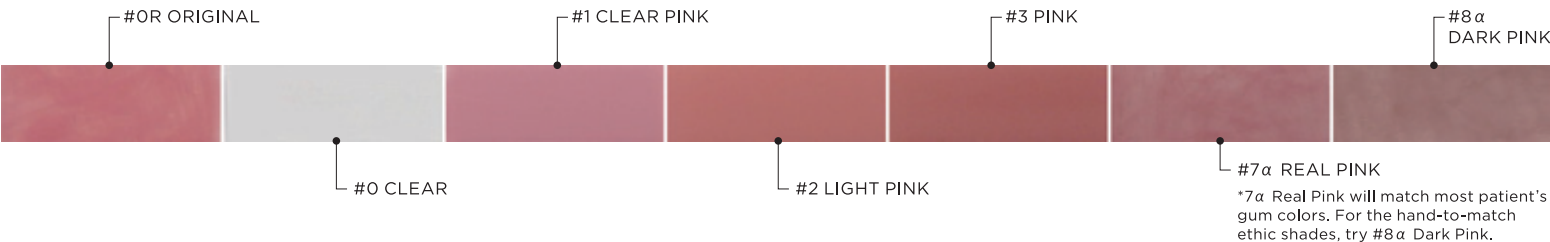
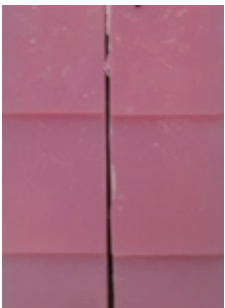
With BIO-TONE, metal frameworks can be added when additional rigidity is necessary in special cases. The elasticity of BIO-TONE can be controlled through its thickness during fabrication.

BIO-TONE is especially easy to grind and polish in a short amount of time without the use of system specific tools and without feathering, leaving a brilliant shine and smooth finish that will not fade.

BIO-TONE has been shown to contain no residual monomers and is allergen free.

BIO-TONE' s UV Resistance Results

Resin pieces on the right are resins in their original state and the pieces on the left are the results after prolonged exposure to light. As you can see, there is not discoloration with BIO-TONE even after prolonged exposure to light.



*7α Real Pink will match most patient's gum colors. For the hand-to-match ethic shades, try #8α Dark Pink.



RELINING PREPRIMER 15ML
Preparation material for BIO-TONE relining and prosthetic teeth addition.



SUPER PRIMER 30ML
Priming material for BIO-TONE repairs

